



# **Nordic Tire** <sup>TM</sup>

Developed in Cooperation with



and **EGENES** Norway  
BRANNTÉKNIKK AS

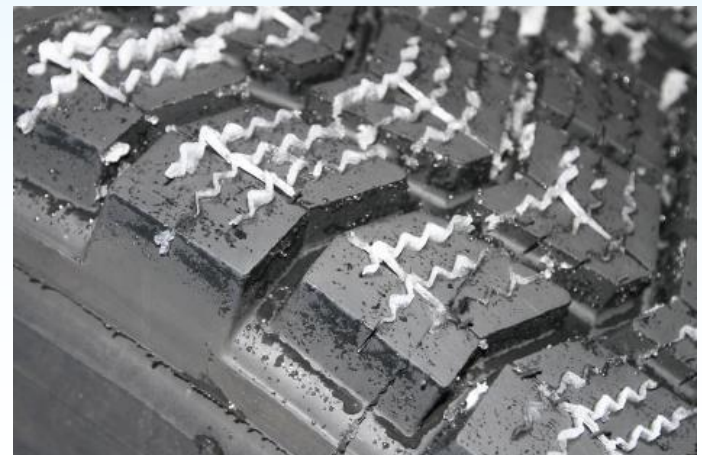


Tested, approved and used  
by the  
**Royal Norwegian Air Force**

With the **SnowCross** range, Nordic Tire offers a specific tyre solutions for high performance service on snow and ice covered roads, runways or concrete surfaces. The development of these products complies with the requirements of single fitted fire fighting trucks, rescue trucks, military or service trucks which have to perform well and reliably in the extreme hard and long lasting winter conditions in Nordic countries.

Nordic Tires fulfil the ECE R 109 standard for retreaded truck tires

- **395/85 R 20 SnowCross APD 33-540**
- **16.00 R 20 SnowCross APD 38-600**
- **445/80 R 25 SnowCross APD 40-610**



# ***SnowCross fitting: Key benefits***

- **As a real winter tire in 20 inch, SnowCross fits the rescue trucks with the full driving power**
- **No time and safety losses in rescue, military or service missions during hard winter conditions**
- **On ice and snow, SnowCross allows fast, safe, perfect and stress less driving**
- **The SnowCross tires offer a high level of GRIP without studs or other snow traction devices**
- **SnowCross is less expensive than off-road tires and offers by far the best winter performance on the market**
- **As retread tyre solution, SnowCross reduces the running costs and improves the CO<sub>2</sub> balance**



# ***SnowCross Technology: Radial construction for high performance, safety and durability***

**Shoulder offset  
for more traction in  
deeper snow**

**Optimized Tread Design with  
intensive wave sipping, various  
edges and bloc bridges**

**Radial construction  
for a smooth and quiet  
ride**

**M+S Tread technology  
for Improved Winter  
Service ( I.W.S )**

**APD Fitting  
(All Position Drive)**

**Steel casing with  
3 steel belts and sidewall  
protectors**


**Non directional  
tread design for added  
versatility**

**Specific tread  
compound for winter  
service**

**Hot omega  
retread offers maximum  
reliability**



<b>Technical data</b>	<b>APD 33-540</b>	<b>APD 38-600</b>	<b>APD 40-610</b>	<b>SnowCross</b>
<i>Tire size</i>	<b>395/85R20</b>	<b>16.00R20</b>	<b>445/80R25</b>	
<i>Load/Speed-Index</i>	168G	173G	170E	
<i>Load capacity</i>	5600 kg	6500 kg	6000 kg	
<i>Tread traction with</i>	33 cm	38 cm	40 cm	
<i>Rolling radius</i>	540 mm	600 mm	610 mm	
<i>Tread depth</i>	20 mm	20 mm	20 mm	
<i>High density wave sipping</i>	yes	yes	yes	
<i>IWS Tread Technology</i>	yes	yes	yes	
<i>Outside diameter</i>	1180 mm	1338 mm	1350 mm	
<i>Section with</i>	395 mm	440 mm	445 mm	
<i>Tubeless fitting</i>	yes	yes	yes	
<i>Fitting position</i>	All Position Drive	All Position Drive	All Position Drive	
<i>Retread process</i>	Full Mould Warm	Full Mould Warm	Full Mould Warm	

Distribution in Scandinavia through the  **rosenbauer** general agencies and tire retailers



**NORWAY**

**EGENES**  
BRANNTTEKNIKK AS

Nulandsvika 3.  
N-4400 FLEKKEFJORD  
Phone: +47 3832 0800  
[www.egenes.as](http://www.egenes.as)



**SWEDEN**

SALA BRAND AB  
Box 64  
SE-73321 SALA  
Phone: +46 224 373 62  
[www.salabrand.se](http://www.salabrand.se)



Nibblingsvägen 14.  
SE-89155 ARNÄSVALL  
Phone: +46 660 542 16  
[www.gummigrossen.se](http://www.gummigrossen.se)



**FINLAND**

KULMALA AB  
Linjatie 4  
FI-01260 VANTAA  
Phone: +358 9 8751 800  
[www.veljeksetkulmala.fi](http://www.veljeksetkulmala.fi)



Malminkartanonkuja 3.  
FI-00390 HELSINKI  
Phone: +358 207 490 810  
[www.rengasnet.fi](http://www.rengasnet.fi)

 **Nordic Tire** <sup>TM</sup>

**The right GRIP for fast and save rescue in winter**